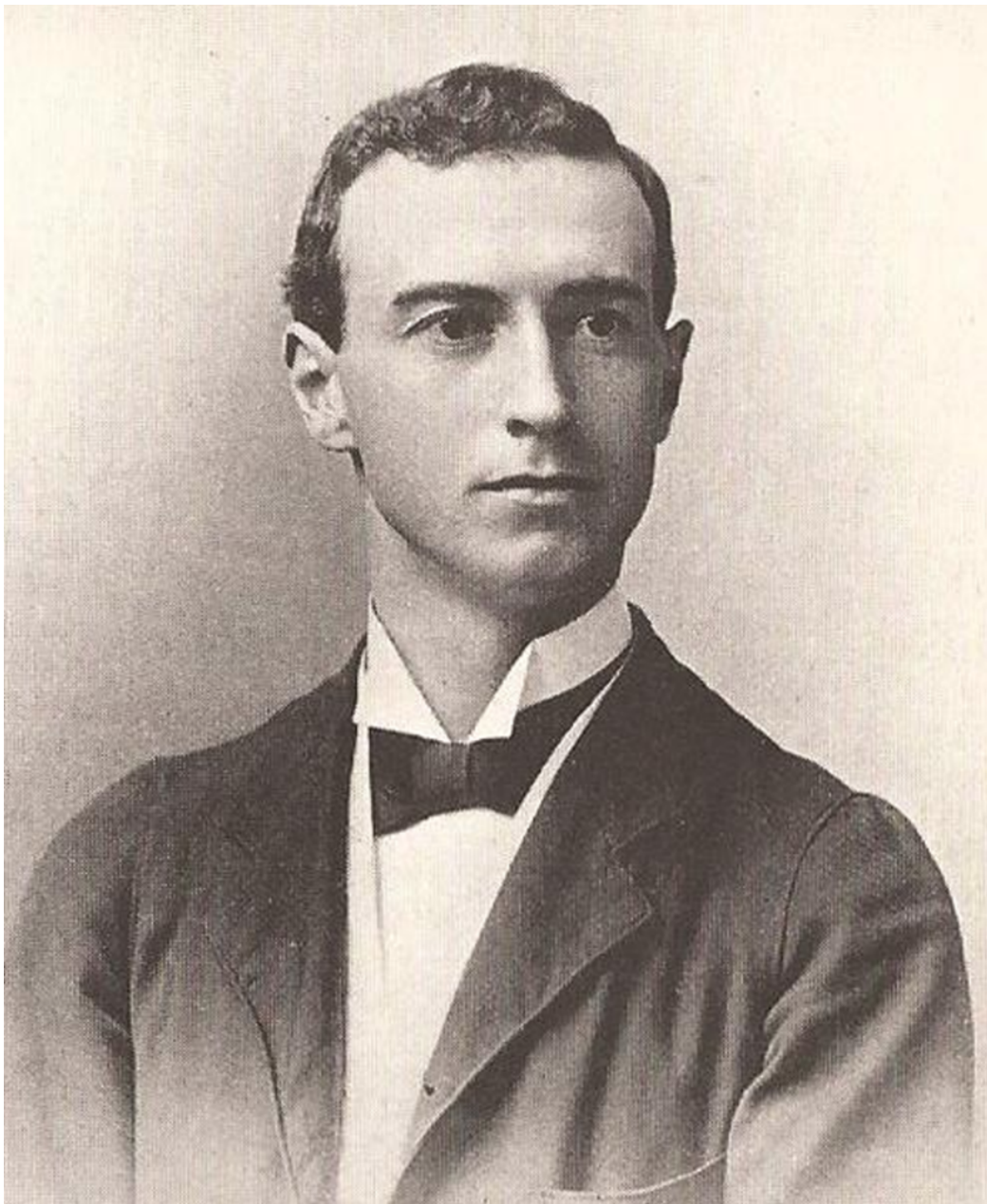


A Real Life Seance with Wallace Sabine... the Father of Room Acoustics

Published July 11th, 2023

Marshall Chasin, AuD



Wallace Clement Sabine, Physicist, Harvard Professor, and the Father of Architectural Acoustics (Photo: Sabine Memorial).

What physical parameters constitute a good sounding musical venue? For this we need to go back to Wallace Clement Sabine (1868-1919)—arguably the most famous name in architectural

acoustics. Sabine even has a unit of measurement named after him (the Sabine Formula or Sabine Equation), and in Cincinnati there is a major hall named after him. I recently caught up with Wallace Sabine at a séance on a dark and stormy night. Here follows our “virtual” conversation about reverberation time.



MC: Hello, Professor Sabine. May I call you Wallace?

WS: No.

MC: What about Wally?

WS: No.

MC: Well, Professor Sabine, I understand that there are four essential elements that constitute a good sound hall: 1) An adequate sound level for both the performer and the listener; 2) An early first sound reflection; 3) Sound that is evenly distributed; and 4) Reverberation characteristics that are appropriate for the type of music being played.

WS: Yes.

MC: And I understand that one of the most important is the reverberation time?

WS: Yes.

MC: One thing that comes out of the study of reverberation time is that the ratio of early reflections (perhaps at 80 msec) to longer reflections can be used to convey some information about the quality of a performance hall.

WS: Yes.

MC: Well, was it related to the finding that this ratio (known as C80) correlates highly with clarity (temporal definition), and that a high ratio implies good clarity with the direct sound and the early reflections arriving earlier than 80 msec to the remainder of the energy arriving later than 80 msec?

WS: Yes.

MC: And also that a low ratio indicates a lack of early reflections and excessive reverberation? One reason for the success and lasting usefulness of rectangular music halls is that strong early reflections are provided by the side walls as well as the ceiling, thereby enhancing clarity.

WS: Yes.

MC: Hmm...Let's turn to another aspect of reverberation time. Is it true that the sound quality of certain types of music are optimized with certain reverberation times and, indeed, that is why they came to be? For example, organ music has a lot of sustained notes that echo around and are best heard in larger venues with longer reverberation times such as 1.5-2.5 seconds. Or perhaps, organ music became well-loved because the halls of the time had reverberation times between 1.5 and 2.5 seconds?

WS: Yes.

MC: I guess we are not getting a lot out of you today. Let me try a different tack. I will give you a type of music, and you tell me the desired reverberation time for each type.

WS: Yes.

MC: Excellent. Let's go! Opera.

WS: 1.3-1.6 seconds.

MC: Wow! Chamber music.

WS: 1.0-1.5 seconds.

MC: Concert halls.

WS: 1.7-2.0 seconds.

MC: Romantic music.

WS: 2.0-2.3 seconds.

MC: Live theater.

WS: 1.0 seconds.

MC: Speech in conference rooms.

WS: 0.4-0.9 seconds.

MC: Well, thank you for that information. Am I correct in assuming that the reason for optimal speech in conference rooms (and presumably classrooms) is that the less the reverberation, the better?

WS: Yes.

MC: Oh dear...I guess we're back to shorter answers!

WS: Not at all! In any space, it's always a balance between being too live, and too dead...if you'll excuse the pun! Reverberation times of 0.1 seconds would make the room sound stale and dead, and in that same room, if the reverberation time was 5 seconds, nobody would be able to understand anything.

And you are correct that, for much of history, the music that was played was a direct reflection of the architecture that was available at that time. I don't think that organ music would be (or is) as appreciated as much today in a multi-purpose room as it was with the large cathedrals of yesteryear.

But even reverberation time has its limitations. For example, the Boston Symphony Hall, the San Francisco Davies Hall, and the London Barbican Large Hall all have similar reverberation times at about 1.7-1.85 seconds. Yet, the first two halls sound great, while the Barbican Hall only has been rated as fair-to-good sound quality.

MC: Well, can I talk now? You seem to want to grab the podium! I think that we are done and I will let you get back to whatever you were doing. Good bye!

WS: Well, I wasn't finished. I wanted to talk about...

Portions of this article were edited and adapted from [two articles](#) that appeared in Dr Chasin's blog at hearinghealthmatters.org.